



ZAXIS 120 In 2022 Crawler Excavator With Hitachi Mechanism And Max Digging Depth 5570

Our Product Introduction

more products please visit us on used-excavatormachine.com

Basic Information

- Place of Origin: Japan
- Brand Name: HITACHI
- Model Number: ZX120
- Minimum Order Quantity: 1Sets
- Price: 10000-26000 USD
- Packaging Details: Container,Bulk
- Payment Terms: L/C, D/A, D/P, T/T, Western Union, MoneyGram
- Supply Ability: About 106 units are supplied every year



Product Specification

- Gradeability: 70%
- Bucket Capacity: 0.52
- Travel Speed: 3.4/5.5
- Max Digging Depth: 5570
- Engine Model: ISUZU CC-4BG1TC
- Working Weight: 12200
- Product Type: Crawler Excavator
- Number Of Cylinders: 4
- Highlight: Hitachi ZAXIS 120 Crawler Excavator,
Second Hand Crawler Hitachi Excavator,
Used Hitachi ZAXIS 120 Excavator



Product Description

ZAXIS120 In 2022 Crawler Excavator With Hitachi Mechanism And Max Digging Depth 5570

Product Description:

The Used Hitachi Excavator is a high-performance, reliable and durable piece of heavy machinery designed for various construction and excavation projects. With its advanced Hitachi Excavator Mechanism and powerful engine, this product is sure to meet all your excavation needs. Equipped with a robust ISUZU CC-4BG1TC engine, this crawler excavator boasts four cylinders, providing exceptional power and efficiency. The engine is known for its durability and low fuel consumption, making it a cost-effective choice for any construction site. Moreover, the engine is designed to meet the latest emission standards, ensuring a cleaner and greener operation.

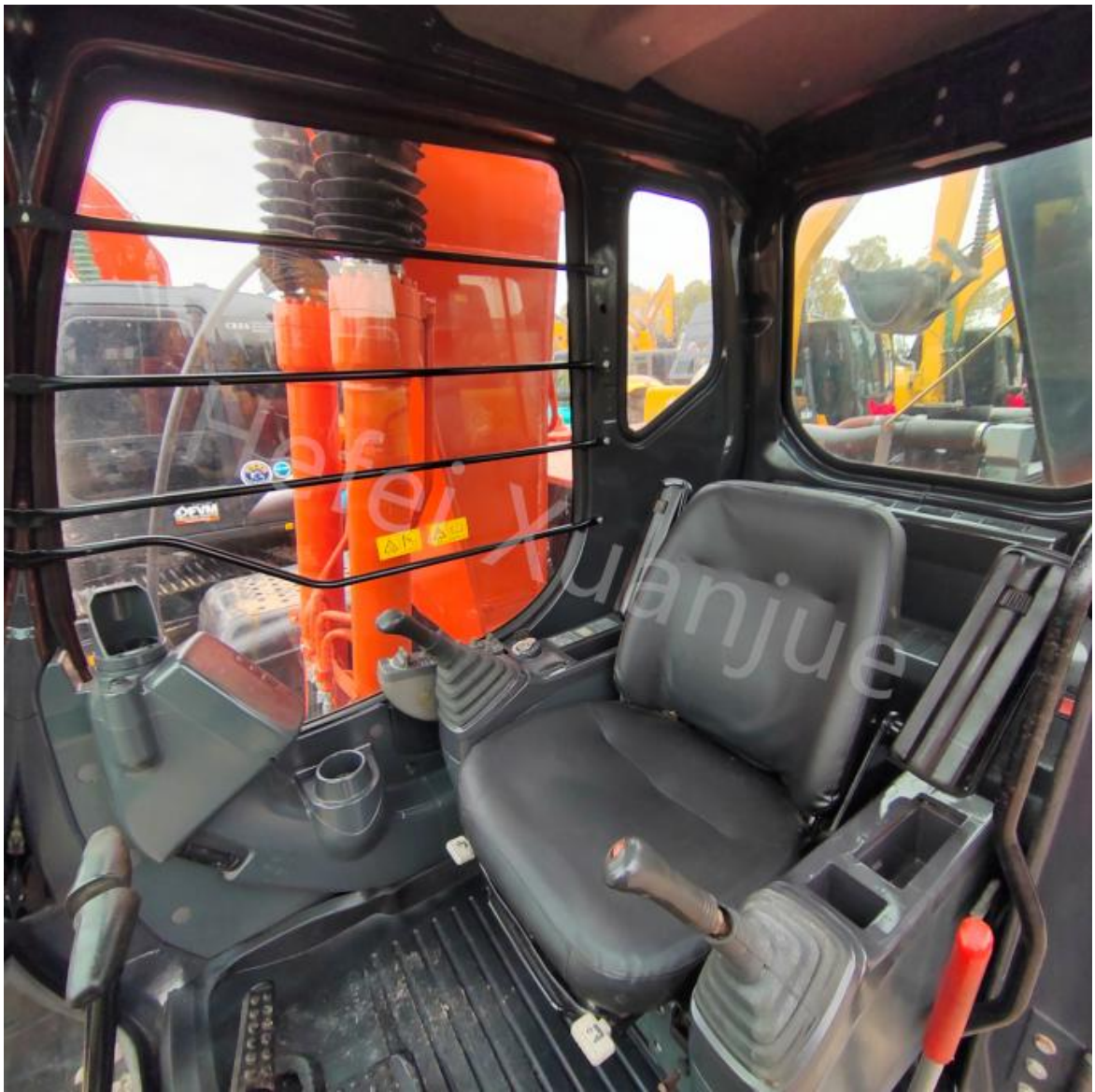
The product type of this excavator is a crawler excavator, which means it is perfect for working on rough and uneven terrain. Its sturdy tracks and powerful engine allow it to easily navigate through different types of soil and terrain, making it suitable for a wide range of projects. One of the key features of this excavator is its large fuel tank capacity of 250 liters. This allows for longer working hours without the need for frequent refueling, increasing productivity and reducing downtime. Additionally, the excavator has a travel speed of 3.4 km/h in low range and 5.5 km/h in high range, making it a fast and efficient machine.











Technical Parameters:

Product Type	Crawler Excavator
Hitachi Excavator Mechanism	Used Hitachi Excavator
Max Digging Depth	5570
Fuel Tank Capacity	250
Gradeability	70%
Travel Speed	3.4/5.5
Bucket Capacity	0.52
Working Weight	12200
Engine Model	ISUZU CC-4BG1TC
Number Of Cylinders	4

Applications:

Hitachi Excavator Mechanism is a well-known and reliable brand that has been producing high-quality construction equipment for decades. Their excavators are widely used in various industries such as construction, mining, and forestry. One of their popular products is the Used Hitachi Excavator, specifically the model ZX120. The ZX120 is a powerful and versatile excavator that is suitable for a wide range of applications. With its superior performance and durability, it has become a trusted choice for many construction companies and contractors. HITACHI is a Japanese multinational company that has been in the construction equipment industry for over a century. Their commitment to excellence and innovation has made them a leader in the market, and their excavators are highly sought after by professionals all over the world. The ZX120 is one of HITACHI's best-selling excavator models. It is a mid-size excavator that offers a perfect balance of power and maneuverability. Its compact size allows it to work efficiently in tight spaces, making it ideal for urban construction projects. It has a maximum digging depth of 5570mm, making it suitable for various excavation tasks. With its powerful arm and

bucket, it can dig deep into the ground with ease, making it perfect for digging foundations, trenches, and other construction-related tasks.

The excavator is equipped with an ISUZU CC-4BG1TC engine, which is known for its reliability and fuel efficiency. This engine meets the latest emission standards, making it environmentally friendly. It also has a high torque output, ensuring the excavator's smooth operation even under heavy loads.

Packing and Shipping:

Packaging

The excavator will be packaged in a sturdy wooden crate, lined with protective materials such as bubble wrap and foam to prevent any damage during transit.

All parts and components will be securely fastened and wrapped to prevent any movement or shifting within the crate. The crate will also be labeled with clear instructions and handling guidelines for the carrier, to ensure proper handling during transportation.

Shipping

We offer both domestic and international shipping options for our used Hitachi excavator.

For domestic shipping, we partner with reliable and efficient carriers to ensure timely delivery to your location.

For international shipping, we will handle all necessary customs procedures and documentation to ensure a smooth and hassle-free process for you.

We also offer the option of expedited shipping for urgent orders, at an additional cost.

Once the excavator has been shipped, we will provide you with a tracking number so you can monitor its progress and estimated delivery date.

For any further questions or concerns regarding packaging and shipping, please don't hesitate to contact us.

F & Q:

Xuanjue Serve For You, Best Quality And Lowest Price

Q1. What payment method?

Payment is negotiable

Q2. Will our company provide any service to the machine?

Yes! Before we deliver the machine, we will test, check, service, maintenance and clean it the machine.

Q3. What's the MOQ ?

MOQ is 1set. FOB or others can be negotiated.

Q4. What's the payment terms?

FOB or others can be negotiated.

Q5. Who pays the freight?

This is determined based on the payment method. We can either find a freight forwarder or the customer can designate a freight forwarder.

If you have any questions, you can call and send an email at any time and leave a message. We will answer you as soon as possible after seeing it.



Hefei Xuanjue Construction Machinery Co., Ltd.



13385604601



used-excavatormachine.com

Sanshitou,Xinzhan District,Feidong County,Hefei City,Anhui Province,China