



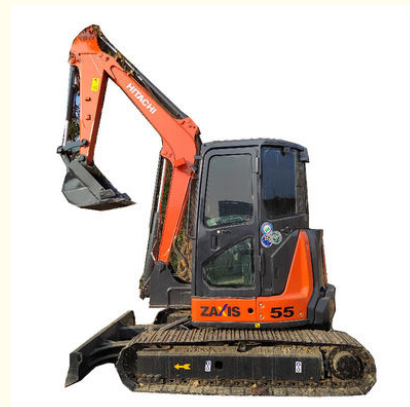
5730 Max Digging Height Hitachi Excavator Mechanism For High Performance Projects

Our Product Introduction

more products please visit us on used-excavatormachine.com

Basic Information

- Place of Origin: Japan
- Brand Name: HITACHI
- Model Number: ZX55
- Minimum Order Quantity: 1 set
- Price: 8000 USD -19800 USD
- Packaging Details: Bulk or Container
- Delivery Time: 5-8 work days
- Payment Terms: L/C, D/A, D/P, T/T, Western Union, MoneyGram
- Supply Ability: 100 units per year



Product Specification

- Engine Model: EDM-4TNV88
- Max Digging Height: 5730
- Gradeability: 58%
- Fuel Tank Capacity: 70
- Product Type: Crawler Excavator
- Travel Speed: 4.0/2.3
- Bucket Capacity: 0.19
- Max Digging Depth: 3550
- Highlight: Hitachi Crawler Excavator Mechanism,
Second Hand Hitachi Excavator Mechanism,
Construction Second Hand Hitachi Excavator

5730 Max Digging Height Hitachi Excavator Mechanism for High-Performance Projects

Product Description:

Used Hitachi Excavator

Are you in need of a reliable and efficient excavator for your construction projects? Look no further than the Used Hitachi Excavator! Known for its superior Hitachi Excavator Mechanism, this crawler excavator is the perfect addition to your fleet. The Used Hitachi Excavator boasts a travel speed of 4.0/2.3, allowing you to swiftly move around the construction site and get the job done in no time. With a maximum digging depth of 3550, this excavator can easily handle even the toughest and deepest excavations. And with a bucket capacity of 0.19, it can efficiently move large amounts of material, making your work more efficient and productive. As a crawler excavator, the Used Hitachi Excavator is designed to provide stability and maneuverability on various terrains, making it suitable for a wide range of construction projects. Its max digging height of 5730 further enhances its versatility, allowing you to tackle both high and low digging tasks with ease.

But what truly sets the Used Hitachi Excavator apart is its Hitachi Excavator Mechanism. This innovative mechanism not only ensures smooth and precise movements, but also increases the durability and longevity of the excavator. With this mechanism, you can trust that your excavator will continue to perform at its best for years to come.

Don't miss out on the opportunity to own a high-quality and reliable Used Hitachi Excavator. Contact us today to learn more about this amazing product and how it can benefit your construction projects. Trust the Hitachi Excavator Mechanism for your excavating needs!

Technical Parameters:

Product Type	Hitachi Excavator
Fuel Tank Capacity	70 L
Max Digging Height	5730 mm
Bucket Capacity	0.19 m ³
Travel Speed	4.0/2.3 km/h
Max Digging Depth	3550 mm
Working Weight	5160 kg
Gradeability	58%
Engine Model	EDM-4TNV88









Applications:

The Versatile and Reliable Used Hitachi Excavator ZX55

The Hitachi Excavator Mechanism has been a trusted name in the construction industry for over 50 years. Known for their high-quality and versatile machinery, Hitachi has established itself as a leader in the market. The Used Hitachi Excavator ZX55 is no exception, with its superior performance and durability, it has become a popular choice among contractors and construction companies.

Brand Name: HITACHI

The brand name Hitachi is synonymous with quality and reliability. With a long-standing reputation in the industry, Hitachi prides itself on delivering top-notch products that meet the demands of its customers. The Used Hitachi Excavator ZX55 is a testament to the brand's commitment to excellence.

Model Number: ZX55

The ZX55 model is a compact and powerful excavator designed to handle a variety of jobs. Its size and maneuverability make it the perfect choice for tight spaces and delicate tasks. With its impressive working weight of 5160 kg, this machine can handle even the toughest jobs with ease.

Place of Origin: Japan

As with all Hitachi products, the Used Hitachi Excavator ZX55 is made in Japan. Known for their advanced technology and attention to detail, Japanese manufacturing ensures that each machine is of the highest quality and built to last.

Working Weight: 5160 kg

The working weight of the ZX55 is one of its most impressive features. This excavator can handle heavy loads and tasks with ease, making it a valuable asset on any job site. Its sturdy and stable design allows for precision and control even in the most challenging conditions.

Gradeability: 58%

The ZX55 has a gradeability of 58%, meaning it can handle steep slopes and uneven terrain without compromising its performance. This makes it an ideal choice for construction projects in difficult locations.

Bucket Capacity: 0.19 m³

The Hitachi Excavator Mechanism is equipped with a 0.19 m³ bucket capacity, allowing for efficient and speedy digging. This size is perfect for a variety of tasks, from digging trenches to loading materials.

Max Digging Height: 5730 mm

The ZX55 has a maximum digging height of 5730 mm, making it suitable for a range of construction and landscaping projects. With its powerful engine and sturdy design, this excavator can handle a variety of tasks at different heights with ease.

Engine Model: EDM-4TNV88

The engine model of the ZX55 is the EDM-4TNV88, a reliable and efficient engine that is specifically designed for Hitachi excavators. This

engine ensures smooth and powerful operation, allowing for increased productivity and reduced downtime.

Conclusion

The Used Hitachi Excavator ZX55 is a top-of-the-line machine that offers exceptional performance and versatility. From its sturdy and stable design to its advanced technology and powerful engine, this excavator is a valuable asset on any job site. With the Hitachi name backing it, you can trust that this excavator will meet and exceed your expectations.

F & Q:

Xuanjue Serve For You, Best Quality And Lowest Price

Q1. What payment method?

Payment is negotiable

Q2. Will our company provide any service to the machine?

Yes! Before we deliver the machine, we will test, check, service, maintenance and clean it the machine.

Q3. What's the MOQ ?

MOQ is 1set. FOB or others can be negotiated.

Q4. What's the payment terms?

FOB or others can be negotiated.

Q5. Who pays the freight?

This is determined based on the payment method. We can either find a freight forwarder or the customer can designate a freight forwarder.

If you have any questions, you can call and send an email at any time and leave a message. We will answer you as soon as possible after seeing it.



Hefei Xuanjue Construction Machinery Co., Ltd.



13385604601



used-excavatormachine.com

Sanshitou,Xinzhan District,Feidong County,Hefei City,Anhui Province,China